

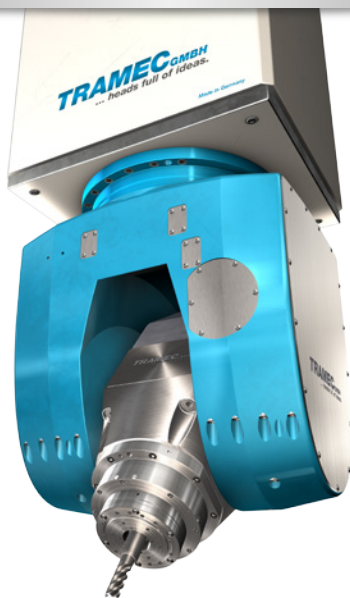
**TRAMEC**<sub>GMBH</sub>  
... heads full of ideas.

**WE  
THINK  
IN MILLING HEADS**





**WWW.TRAMEC.NET**

# MILLING HEAD AC<sup>15</sup>

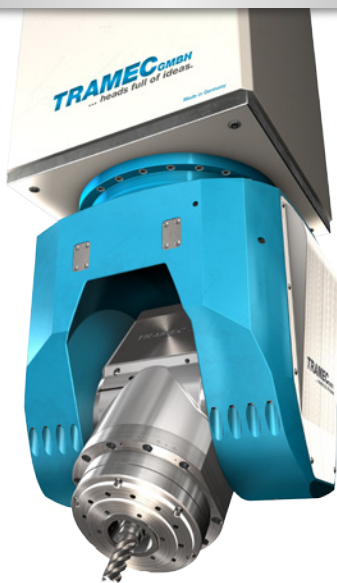


The AC 15 is designed for use in processing light- to medium weight parts. A universal, powerful milling head for high-performance machining with great shock-absorbing properties.

<b>C-AXIS SWIVEL RANGE / SPEED (I) (max.)</b>		+/-360° *
<b>A-AXIS SWIVEL RANGE / SPEED (max.)</b>		+/-100°
<b>CLAMPING FORCE</b>	Nm	1.600
<b>AXIS TORQUE</b>	Nm	800
<b>A-/C-AXIS MEASURING SYSTEM ACCURACY</b>		+/-3,2“
<b>WEIGHT WITHOUT SPINDLE</b>	Kg	500

**\* DEPENDING ON LENGHT OF CABLES AND OTHER CONNECTIONS**

# MILLING HEAD AC 14



The AC 14 provides powerful performance with maximum precision! This is thanks to our own specially developed, water-cooled motor system and flexibility in terms of spindle versions. The all-rounder of the milling heads.

<b>C-AXIS SWIVEL RANGE / SPEED (I) (max.)</b>	↻	+/-360° *
<b>A-AXIS SWIVEL RANGE / SPEED (max.)</b>	↷	+/-100°
<b>CLAMPING FORCE</b>	Nm	2.000
<b>AXIS TORQUE</b>	Nm	1.000
<b>A-/C-AXIS MEASURING SYSTEM ACCURACY</b>		+/-3,2“
<b>WEIGHT WITHOUT SPINDLE</b>	Kg	600

**\* DEPENDING ON LENGHT OF CABLES AND OTHER CONNECTIONS**

# MILLING HEAD AC<sup>6</sup>

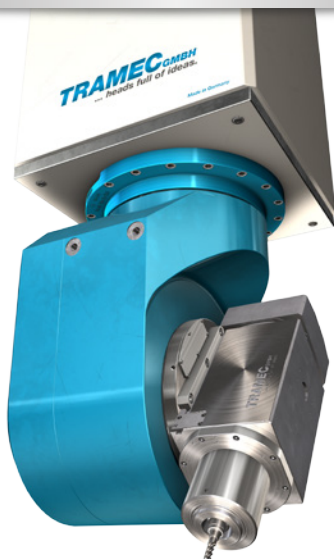


Heavy duty milling made easy! This is the task of the AC 6. Its highly rigid structure makes it reliable and precise, even when put under maximum strain from HSC milling.

<b>C-AXIS SWIVEL RANGE / SPEED (I) (max.)</b>	↪	+/-360° *
<b>A-AXIS SWIVEL RANGE / SPEED (max.)</b>	↻	95°/125°
<b>CLAMPING FORCE</b>	Nm	6.000
<b>AXIS TORQUE</b>	Nm	1.500
<b>A-/C-AXIS MEASURING SYSTEM ACCURACY</b>		+/-3"
<b>WEIGHT WITHOUT SPINDLE</b>	Kg	980

**\* DEPENDING ON LENGHT OF CABLES AND OTHER CONNECTIONS**

# MILLING HEAD AC 16

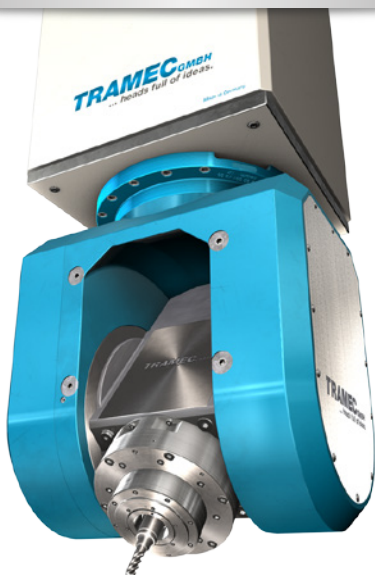


Due to the sleek build of the AC 16, it can be used in compact machines for efficient 5-sided milling.



<b>C-AXIS SWIVEL RANGE / SPEED (I) (max.)</b>	↻	+/-360° *
<b>A-AXIS SWIVEL RANGE / SPEED (max.)</b>	↷	+/-110°
<b>CLAMPING FORCE</b>	Nm	760
<b>AXIS TORQUE</b>	Nm	350
<b>A-/C-AXIS MEASURING SYSTEM ACCURACY</b>		+/-3,3“
<b>WEIGHT WITHOUT SPINDLE</b>	Kg	200

**\* DEPENDING ON LENGTH OF CABLES AND OTHER CONNECTIONS**

# MILLING HEAD AC 11

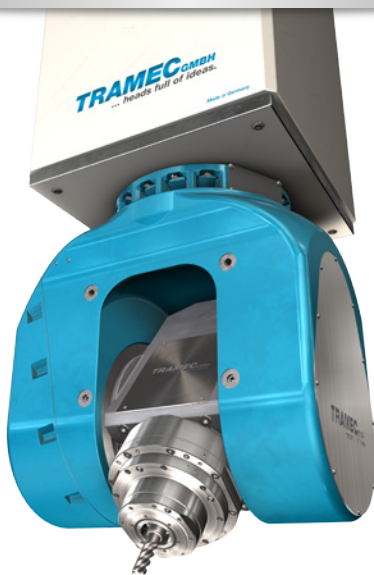


Small, light, fast, precise and yet powerful – that's the AC 11.

<b>C-AXIS SWIVEL RANGE / SPEED (I) (max.)</b>		<b>+/-360° *</b>
<b>A-AXIS SWIVEL RANGE / SPEED (max.)</b>		<b>+/-110°</b>
<b>CLAMPING FORCE</b>	<b>Nm</b>	<b>760</b>
<b>AXIS TORQUE</b>	<b>Nm</b>	<b>350</b>
<b>A-/C-AXIS MEASURING SYSTEM ACCURACY</b>		<b>+/-3,3"</b>
<b>WEIGHT WITHOUT SPINDLE</b>	<b>Kg</b>	<b>290</b>

**\* DEPENDING ON LENGTH OF CABLES AND OTHER CONNECTIONS**

# MILLING HEAD AC7

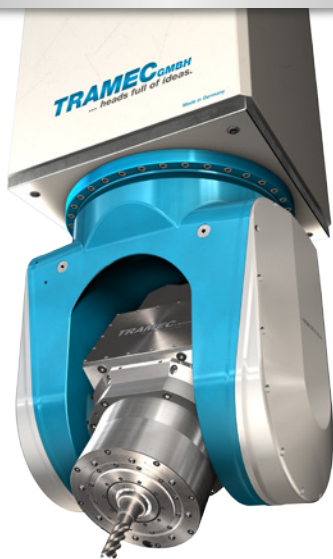


Simply high-tech. Its lightweight, rigid structure and universal usability makes it perfect for processing medium- to large-sized components. The AC 7 sets standards in the world of milling heads.

<b>C-AXIS SWIVEL RANGE / SPEED (I) (max.)</b>	↶	+/-360° *
<b>A-AXIS SWIVEL RANGE / SPEED (max.)</b>	↷	+/-110°
<b>CLAMPING FORCE</b>	Nm	3.000
<b>AXIS TORQUE</b>	Nm	610
<b>A-/C-AXIS MEASURING SYSTEM ACCURACY</b>		+/-3,3“
<b>WEIGHT WITHOUT SPINDLE</b>	Kg	345

**\* DEPENDING ON LENGHT OF CABLES AND OTHER CONNECTIONS**

# MILLING HEAD AC 8M75/8M150



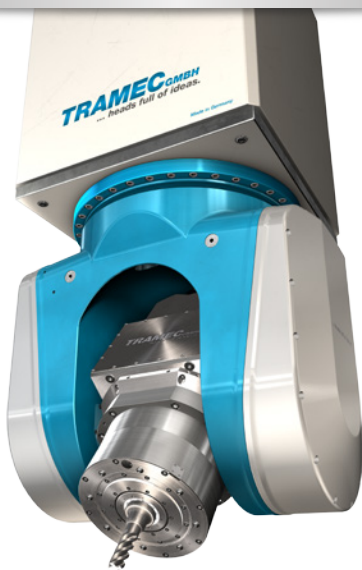
The modular structure of the drives provides the AC 8M with flexibility and helps it perform well in HSC milling. Because of the AC 8M's typically Tramec monolithic design and its relatively low net weight, even challenges in HSC steel processing which exceed the norm are conquered.

<b>C-AXIS SWIVEL RANGE / SPEED (I) (max.)</b>		<b>+/-360° *</b>
<b>A-AXIS SWIVEL RANGE / SPEED (max.)</b>		<b>+/-110°</b>
<b>CLAMPING FORCE</b>	<b>Nm</b>	<b>6.000</b>
<b>AXIS TORQUE</b>	<b>Nm</b>	<b>750 / 1.500</b>
<b>A-/C-AXIS MEASURING SYSTEM ACCURACY</b>		<b>+/-3,2"</b>
<b>WEIGHT WITHOUT SPINDLE</b>	<b>Kg</b>	<b>580 / 630</b>

**\* DEPENDING ON LENGTH OF CABLES AND OTHER CONNECTIONS**



# MILLING HEAD AC 8M300



The AC8 M300 achieve an outstanding performance with a maximum on flexibility. According to its powerful direct drives with 3000 Nm (S1) torque, the AC 8M300 is the optimal solution for titanium and steel machining.


<b>C-AXIS SWIVEL RANGE / SPEED (I) (max.)</b>	↷	+/-360° *
<b>A-AXIS SWIVEL RANGE / SPEED (max.)</b>	↶	+/-110°
<b>CLAMPING FORCE</b>	Nm	6.000
<b>AXIS TORQUE</b>	Nm	3.000
<b>A-/C-AXIS MEASURING SYSTEM ACCURACY</b>		+/-3,2“
<b>WEIGHT WITHOUT SPINDLE</b>	Kg	750

**\* DEPENDING ON LENGHT OF CABLES AND OTHER CONNECTIONS**

# AXIS UNIT AE 225

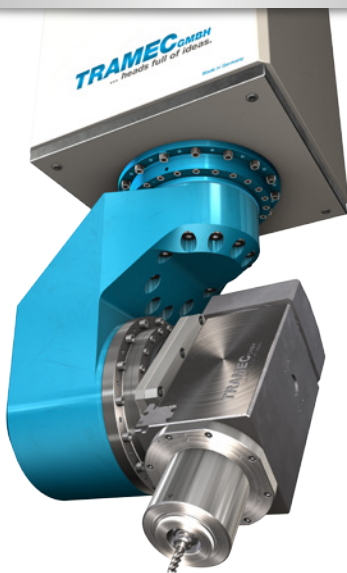


A drive unit that can be used anywhere! An integrated drive unit capable of simultaneous processing with an infinitely variable clamping and measuring system, also suitable for simultaneous usage. If you're looking for precise positioning without any compromises, this is the product to use.



<b>C-AXIS SWIVEL RANGE / SPEED (I) (max.)</b>		<b>+/-360° *</b>
<b>A-AXIS SWIVEL RANGE / SPEED (max.)</b>		<b>300°/s</b>
<b>CLAMPING FORCE</b>	<b>Nm</b>	<b>650</b>
<b>AXIS TORQUE</b>	<b>Nm</b>	<b>200</b>
<b>A-/C-AXIS MEASURING SYSTEM ACCURACY</b>		<b>+/-5"</b>
<b>WEIGHT WITHOUT SPINDLE</b>	<b>Kg</b>	<b>20</b>

**\* DEPENDING ON LENGTH OF CABLES AND OTHER CONNECTIONS**

# MILLING HEAD TAE<sup>225</sup>

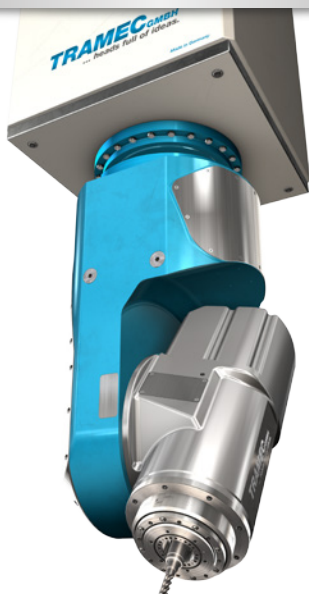


The TAE225 is a modular structured milling head for easy processing in aluminum, composites and CFRP.



<b>C-AXIS SWIVEL RANGE / SPEED (I) (max.)</b>		+/-360° *
<b>A-AXIS SWIVEL RANGE / SPEED (max.)</b>		+/-110°
<b>CLAMPING FORCE</b>	Nm	650
<b>AXIS TORQUE</b>	Nm	200
<b>A-/C-AXIS MEASURING SYSTEM ACCURACY</b>		+/-5"
<b>WEIGHT WITHOUT SPINDLE</b>	Kg	95

**\* DEPENDING ON LENGTH OF CABLES AND OTHER CONNECTIONS**

# MILLING HEAD TQ1



Thanks to its special developed slim design the TQ1 machine work pieces with very deep cavities in casting and mold effective and precisely. According to continuous clamping systems the axes can be freely positioned, so that even HSC-machining in steel will be mastered safely.

<b>C-AXIS SWIVEL RANGE / SPEED (I) (max.)</b>		<b>+/-360° *</b>
<b>A-AXIS SWIVEL RANGE / SPEED (max.)</b>		<b>+/-110°</b>
<b>CLAMPING FORCE</b>	<b>Nm</b>	<b>1.900</b>
<b>AXIS TORQUE</b>	<b>Nm</b>	<b>110</b>
<b>A-/C-AXIS MEASURING SYSTEM ACCURACY</b>		<b>+/-3,3“</b>
<b>WEIGHT WITHOUT SPINDLE</b>	<b>Kg</b>	<b>200</b>

**\* DEPENDING ON LENGHT OF CABLES AND OTHER CONNECTIONS**